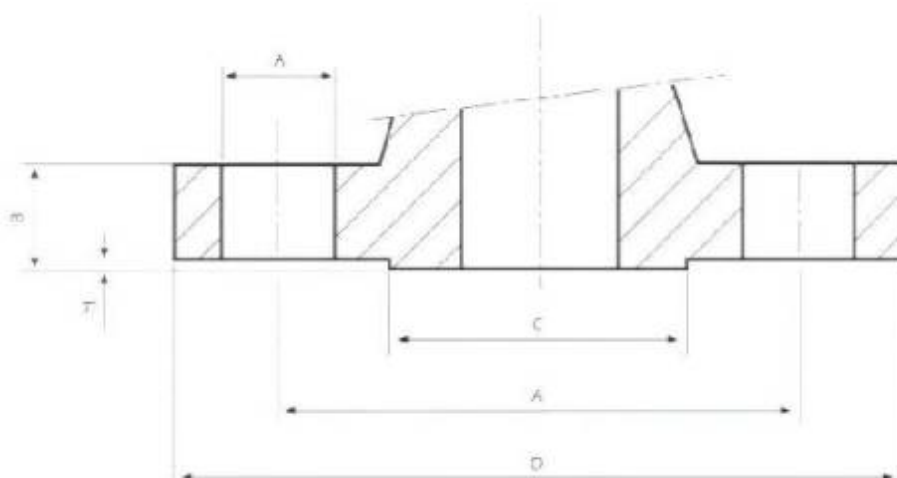


## TLAKOVÉ A TEPLOTNÍ TŘÍDY PODLE ANSI B 16.34

A105-216 WCB - A350 LF2							
°C	PRACOVNÍ TLAKY PRO JEDNOTLIVÉ TŘÍDY						
	150	300	600	800	900	1500	2500
-29+38	19.7	51.0	102.0	136.2	153.1	255.5	425.4
93	17.9	46.5	93.1	124.1	139.6	232.7	387.8
149	15.6	45.2	90.7	120.7	135.8	226.1	377.1
204	13.8	43.8	87.6	116.5	131.0	218.6	364.0
260	11.7	41.4	82.7	110.0	123.8	206.5	344.0
316	9.7	37.9	75.5	100.7	113.1	188.6	314.4
343	8.6	36.9	74.1	98.6	111.0	185.1	308.5
371	7.6	36.9	73.4	97.9	110.3	183.7	306.1
399	6.6	34.8	69.6	92.7	104.1	173.7	289.6
427	5.5	28.3	56.9	75.8	85.2	142.0	236.5
454	4.5	18.6	36.9	49.3	55.5	92.4	153.8
593	-	-	-	-	-	-	-
621	-	-	-	-	-	-	-
649	-	-	-	-	-	-	-
677	-	-	-	-	-	-	-
704	-	-	-	-	-	-	-
732	-	-	-	-	-	-	-
760	-	-	-	-	-	-	-
788	-	-	-	-	-	-	-
816	-	-	-	-	-	-	-

## TLAKOVÉ A TEPLOTNÍ TŘÍDY PODLE ČSN 13 0010 PRO LITINU A OCELOLITINU (nejvyšší pracovní přetlaky uvedeny v MPa)

°C	ČSN 422420 ČSN 422425			ČSN 422420 422425	ČSN 422643	ČSN 4223 14	ČSN 422643					
	PN 2,5	PN6	PN10	PN16	PN16	PN25	PN25	PN40	PN64	PN100	PN160	PN250
20-120	0.25	0.60	1.0	1.6	1.6	2.5	2.5	-	-	-	-	-
200	0.20	0.48	0.8	1.28	1.6	2.25	2.5	4.0	6.3	10	16	25
250	0.17	0.42	0.7	1.12	1.38	2.18	2.15	3.44	5.42	8.61	13.8	21.5
300	0.15	0.36	0.6	0.96	1.24	2.0	1.93	3.09	4.87	7.73	12.4	19.3
350	-	-	-	-	1.09	1.75	1.79	2.72	4.29	6.8	10.9	17
400	-	-	-	-	0.94	-	1.47	2.35	3.7	5.88	9.41	14.7



## ANSI 150

Rozměr	D	B	C	H	n	F	A
1/2"	89	11.1	34.9	1.6	4	16	60.3
3/4"	98.5	12.7	42.9	1.6	4	16	69.9
1"	108	14.3	50.8	1.6	4	16	79.4
1 1/4"	117.5	15.9	63.5	1.6	4	16	88.9
1 1/2"	127	17.5	73	1.6	4	16	98.4
2"	152.5	19.1	92.1	1.6	4	19	120.7

## DIN PN 10 – 16

Rozměr	D	B	C	H	n	F	A
DN20	105	16	58	2	4	14	75
DN25	115	16	68	2	4	14	85
DN32	140	16	78	2	4	18	100
DN40	150	16	88	3	4	18	110
DN50	165	18	102	3	4	18	125

## ANSI 300

Rozměr	D	B	C	H	n	F	A
1/2"	95.5	14.3	34.9	1.6	4	16	66.7
3/4"	117.5	15.9	42.9	1.6	4	19	82.5
1"	124	17.5	50.8	1.6	4	19	88.9
1 1/4"	135.5	19	63.5	1.6	4	19	98.4
1 1/2"	155.5	20.7	73	1.6	4	22.5	114.3
2"	165	22.2	92.1	1.6	8	19	127

## DIN PN 25- 40

Rozměr	D	B	C	H	n	F	A
DN15	95	14	45	2	4	14	65
DN20	105	18	58	2	4	14	75
DN25	115	18	68	2	4	14	85
DN32	140	18	78	2	4	18	100
DN40	150	18	88	3	4	18	110
DN50	165	20	102	3	4	18	125